
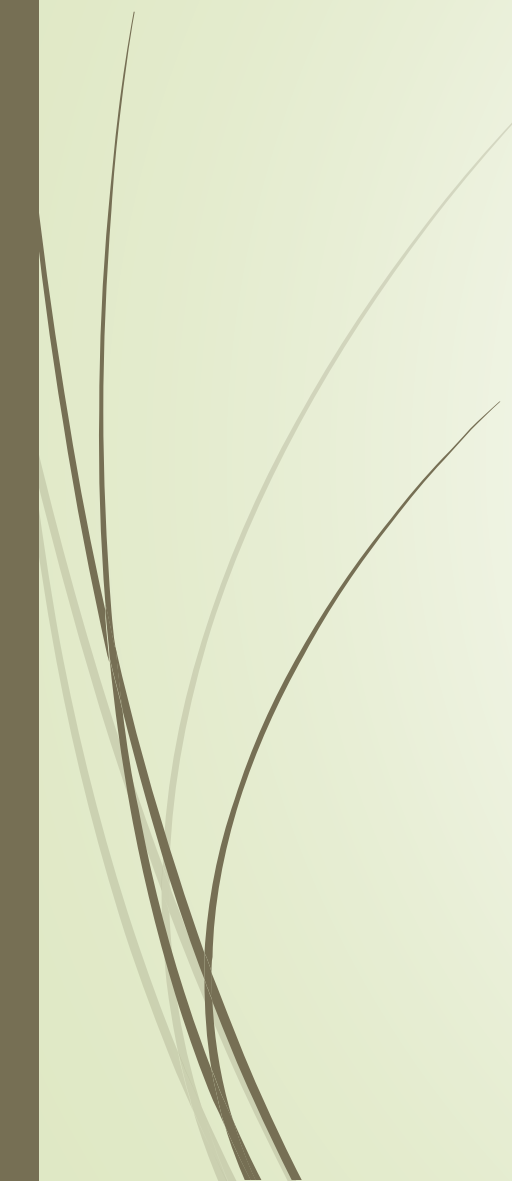


# Riverview School Sturgeon Creek School Attendance Zone Review

PUBLIC CONSULTATION

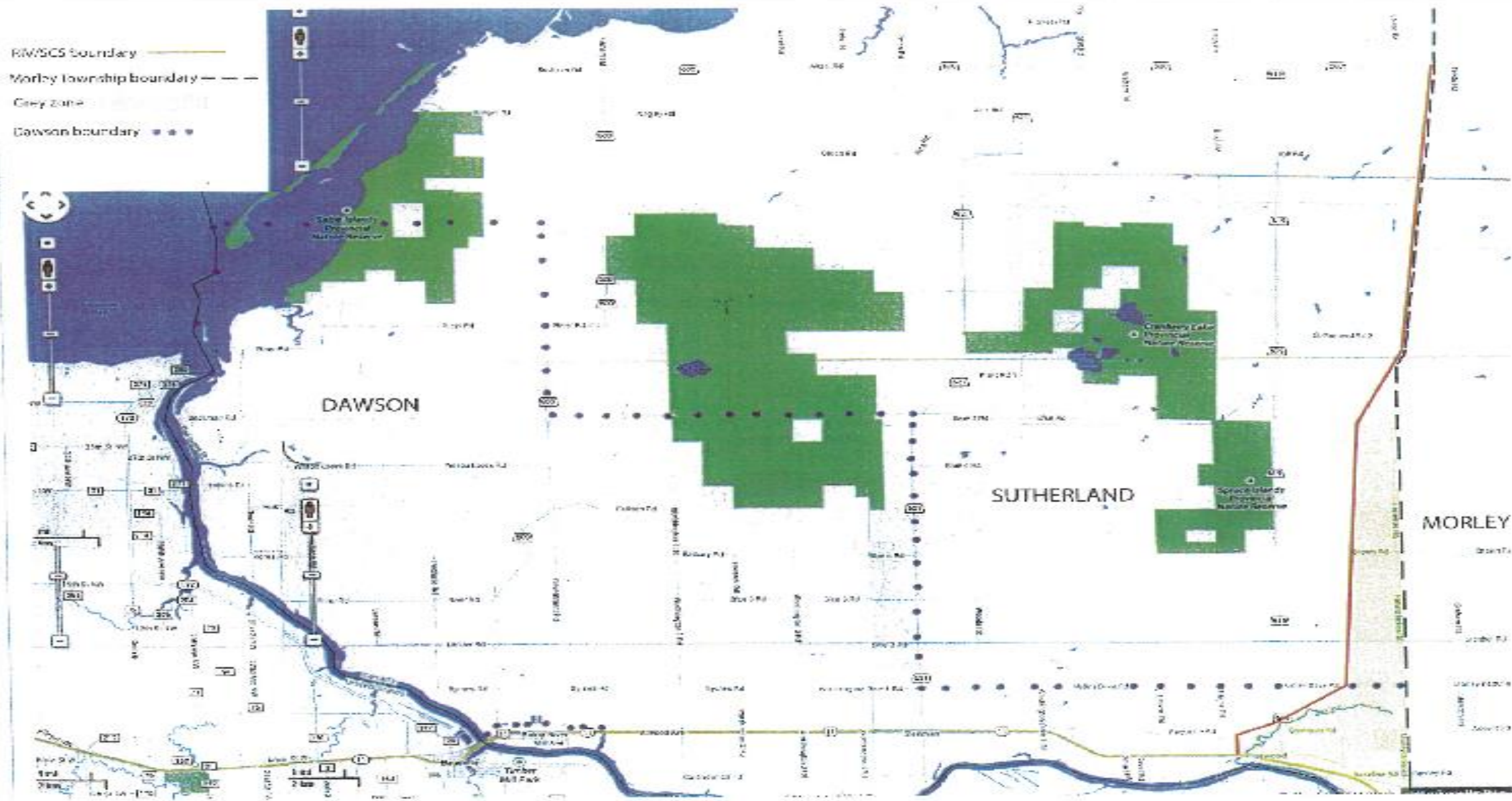
FEBRUARY 24, 2015

- 
- 
- ☐ The Rationale for the proposed Attendance Zone changes
  - ☐ Current school attendance zones
  - ☐ Historical practices
  - ☐ Enrolment projections
  - ☐ Feedback
  - ☐ Next Steps

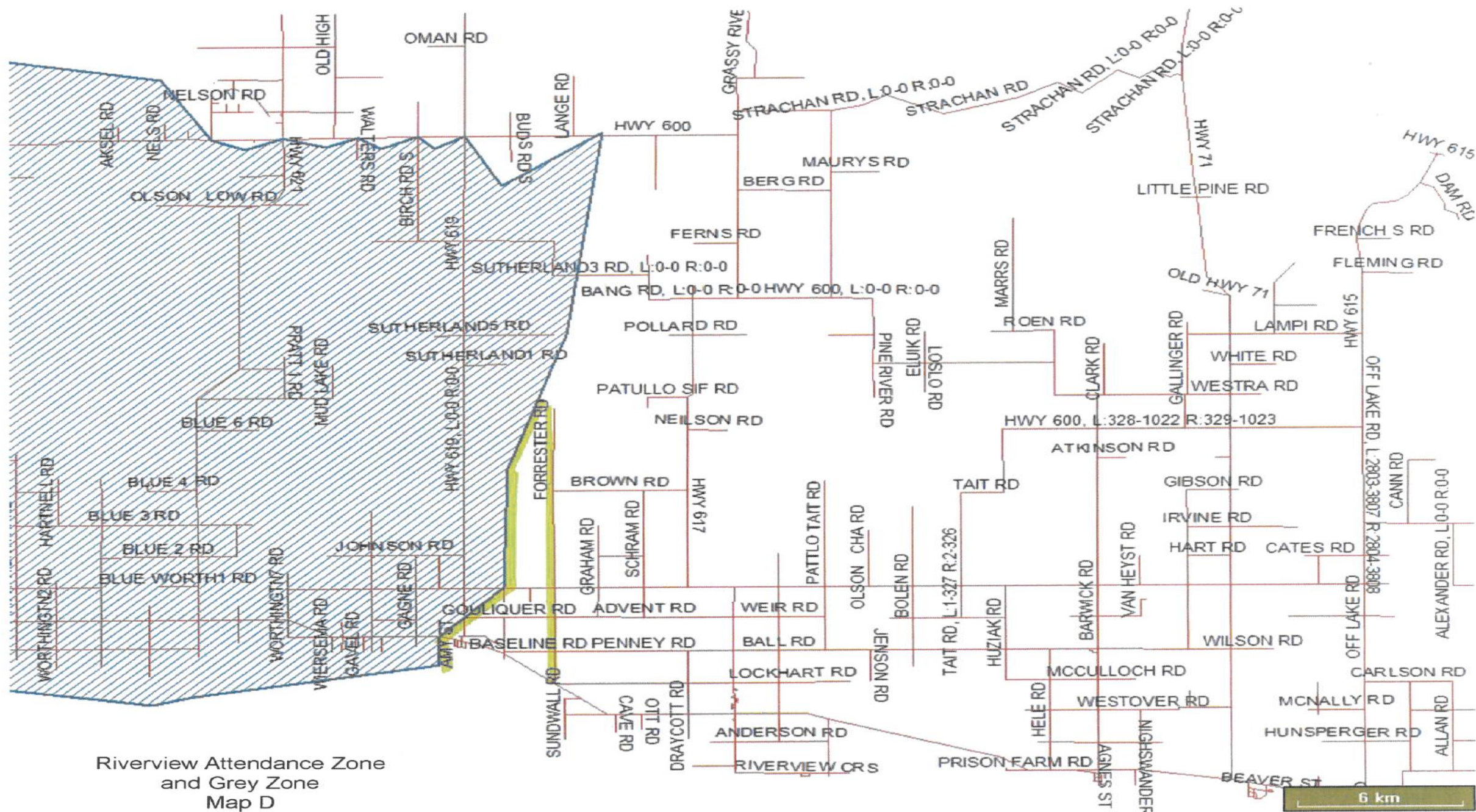


# Rationale

- ❑ Board approved the Attendance Zone Review for Riverview School and Sturgeon Creek School on January 6, 2015
- ❑ The review was initiated between Riverview School and Sturgeon Creek Zone so that a new attendance zone line can be drawn so that transportation services can be provided within the transportation policy without special consideration of the Board of Trustees.







Riverview Attendance Zone  
and Grey Zone  
Map D


# Enrolment

The following school capacity, current enrolment and projections are provided for information. These projection were updated in November 2014.

Enrolment Projections	Riverview	Sturgeon Creek	McCrosson-Tovell
Capacity	193	190	121
14-15 - current	118	110	25
15-16	111	105	26
16-17	113	103	26
17-18	104	102	24
18-19	100	98	24
19-20	98	95	24
20-21	97	88	22
21-22	91	84	21
22-23	91	78	22
23-24	91	75	22
24-25	92	74	20



## Recommended Option



Establish the new Riverview/Sturgeon Creek Attendance Zone to match the existing east boundary of the Grey Zone, which is the Morley Dilke Road/Forrester Road.





# Next Steps

- ☐ Gather feedback from communities involved:
  - ☐ Public meetings
  - ☐ Flyer for distribution
  - ☐ Newsletters
  - ☐ Newspaper advertisement
- ☐ Analyze feedback and prepare final report for Finance Committee of Board